

## MEDUVENT Standard

Ventilate Wherever You Go







## MEDUVENT Standard

### More Flexibility Thanks to Turbine Technology

Emergency response in secluded regions can be extremely challenging logistically due to long distances and transport times. In such situations the battery life of a medical device is just as critical as the oxygen supply. Especially in challenging emergency situations, EMS field providers should be able to fully concentrate on the patient without worrying about the technology. MEDUVENT Standard makes ventilation possible even without oxygen cylinders. The turbine-driven emergency ventilator maintains ventilation for approximately 8 hours without requiring an external gas supply\*. However, supplemental oxygen in concentrations from 21% to 100% can be delivered to the patient at any time using the universally compatible inhalation tube.

\* with typical ventilation settings for an adult patient



## More Efficiency

### MEDUVENT Standard Replaces the BVM

Using the integrated MEDUtrigger, a single EMS field provider can maintain a good mask seal with both hands while simultaneously ventilating the patient. Located on the ventilation mask, the MEDUtrigger allows the rescuer to deliver a single mechanical breath at a fixed tidal volume – simply by pressing a button with their thumbs. Once a supraglottic airway or endotracheal tube is in place, a single “click” switches MEDUVENT Standard to continuous ventilation with a fixed ventilation rate and volume.

### Immediately under control

Deliver controlled and efficient ventilation without time-consuming and complicated ventilation settings. Simply enter the patient's height or use one of the preset emergency modes and begin safely ventilating immediately, leaving you more time to focus on the patient. Simply more time for the patient!



### More safety for the patient

- The built-in visual and audible alarm system alerts the medical staff in the event of critical situations, such as high and low airway pressure, patient disconnection, high PEEP and others
- A fixed ventilation rate and volume combined with pressure limitation decreases the risk of hyperventilation and gastric insufflation compared to BVM ventilation
- The hygiene filter protects the patient, staff and ventilator from contamination

### Your benefits at a glance

- Powered by turbine, independent of oxygen cylinders
- Battery runtime of approximately 8 hours
- Start ventilating quickly and safely using emergency modes with pre-defined settings or by entering the patient's height
- Better single person performance during CPR and rapid sequence induction (RSI) due to manual ventilation
- Provide non-invasive respiratory treatment in CPAP mode
- Safely reliable with an automatic function check
- Deliver oxygen at any time without oxygen consumption for device operation\*
- Ergonomic and easy operation



## Compact, Light and Easy to Use

### On the Ground and in the Air

MEDUVENT Standard is one of the smallest and lightest emergency and transport ventilators in its class. Because the device weighs about 2 kg and has a volume of 3.5 L, MEDUVENT Standard can be used in settings that have limited space or

require particularly lightweight equipment. Both air rescue services and ground emergency medical services can benefit from the ergonomic and logistical advantages of MEDUVENT Standard.



### A smart combination

MEDUVENT Standard can be combined with MEDUCORE defibrillators on our LIFE-BASE portable systems and be safely mounted to the wall or ceiling of an emergency vehicle.

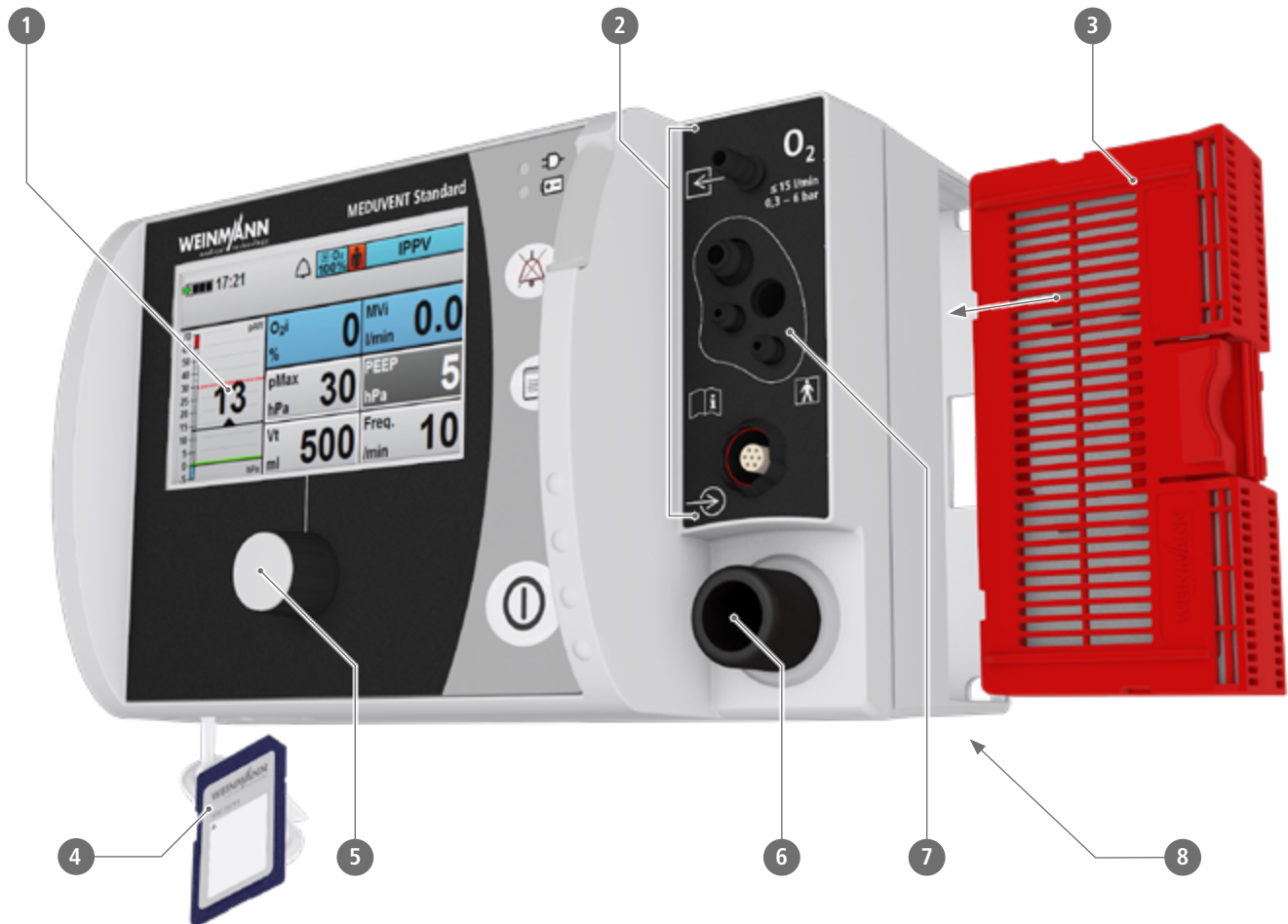


MEDUVENT Standard with MEDUCORE Standard<sup>2</sup>  
on LIFE-BASE 3 NG



MEDUVENT Standard with MEDUCORE Standard<sup>2</sup>  
on LIFE-BASE 1 NG XL

## Clear and Simple



### **1. Ideal monitor layout**

displays the most important measurements and settings

### **2. Easy to access connections on the front of the device**

for MEDUtrigger and FlowCheck sensor connection line

### **3. Hygiene filter**

protects the device from viral and bacterial contamination

### **4. Data storage & updates**

Transfer device configurations and perform software updates yourself with the help of the SD memory card

### **5. User-friendly operation**

navigation knob is quick and easy to operate

### **6. Connection for ventilation hose**

connects the device to the breathing circuit

### **7. Connection for measuring circuit**

for controlling PEEP and monitoring pressure levels

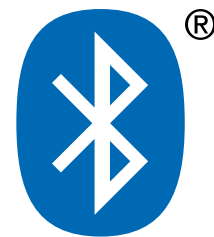
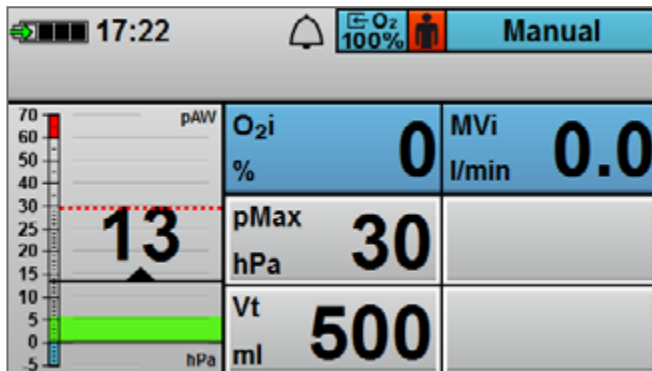
### **8. Li-ion rechargeable battery**

average battery operating time of 8 hours\*

\* with typical ventilation settings for an adult patient

# Prepared for Anything with the Right Functions

MEDUVENT Standard offers ventilation modes for invasive ventilation and non-invasive ventilation. The intuitive menu navigation and simple selection of the right mode make it easy to use.

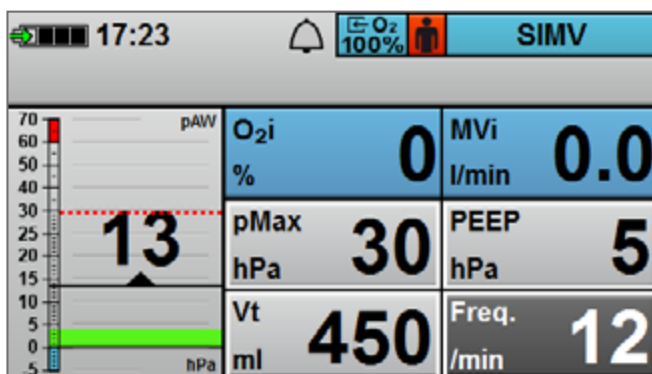


## MEDUtrigger and Manual mode

Supports resuscitation and RSI

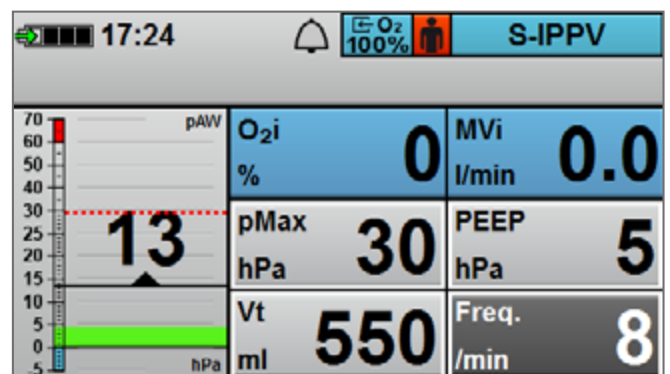
## Bluetooth® technology

Perfectly prepared hardware: future software options already implemented.



## SIMV mode (optional)

Synchronizes MEDUVENT Standard with spontaneous respiratory efforts



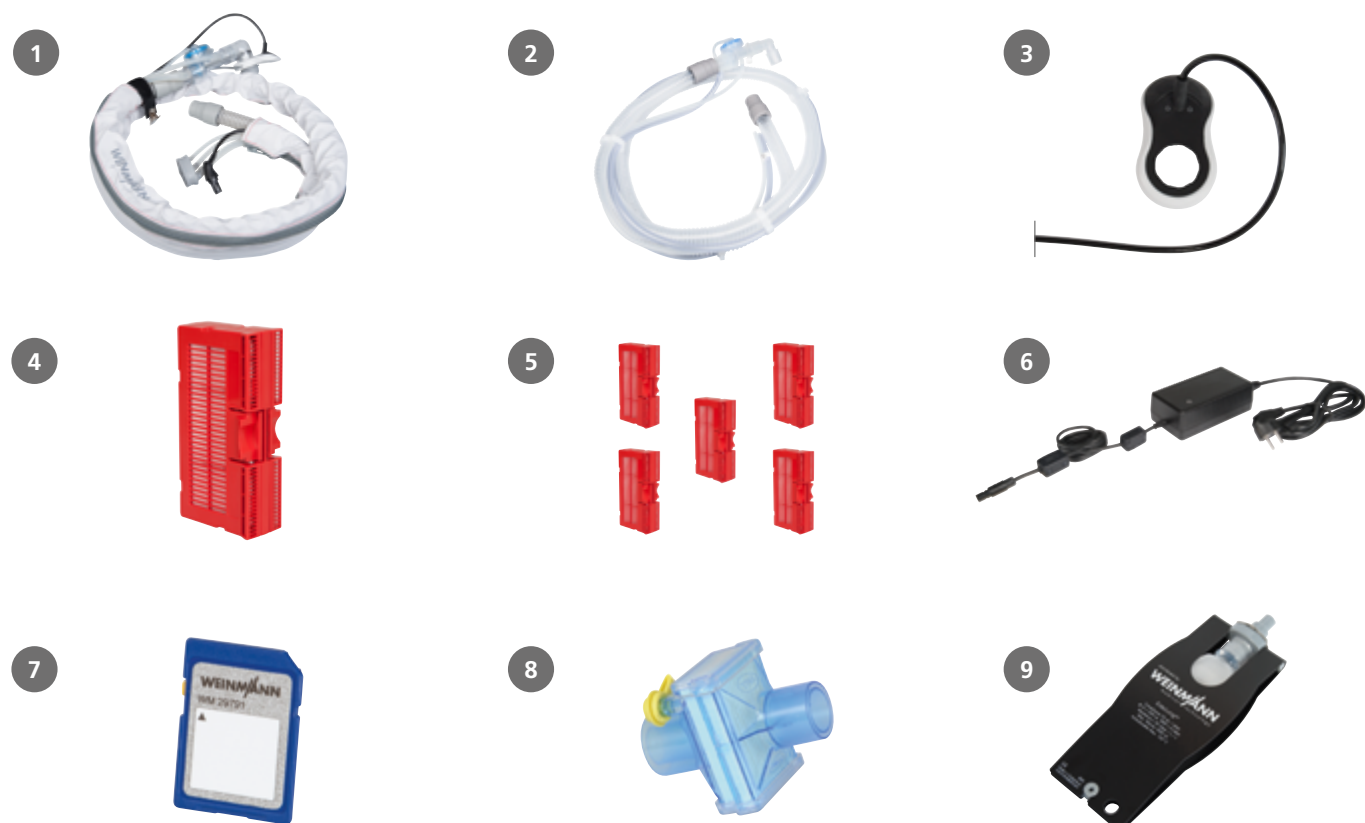
## S-IPPV mode (optional)

Provides mechanical support for every spontaneous respiration





## Accessories and Replacement Parts



1. 2 m reusable breathing circuit
2. 2 m disposable breathing circuit
3. 2 m MEDUtrigger
4. Hygiene filter
5. Set of 5 hygiene filters

WM 35850  
WM 35860  
WM 28992  
WM 35730  
WM 17915

6. Power supply unit and charger
7. SD card
8. Breathing system filter
9. EasyLung

WM 28937  
WM 29791  
WM 22162  
WM 28625

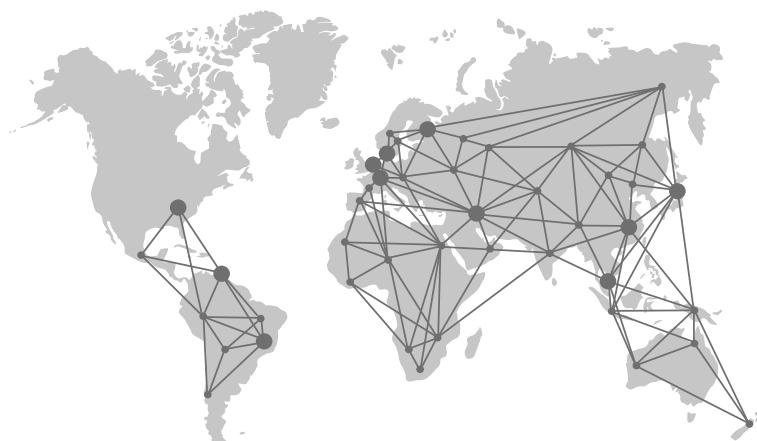
# Examples of Configuration Options







# Our Global Service Network – Professional Support You Can Trust



## Remote Diagnosis (Telesupport) Safety and Reliability Day after Day

With the fast and simple function check, you can always be confident that your device is trouble-free and ready for use. The function check can be performed without connection to an external gas supply. In about 25 seconds MEDUVENT Standard conducts the automatic function check and provides the user with a status report. When a device malfunction occurs, its cause may not be immediately apparent. For reporting purposes, MEDUVENT Standard allows you to store the service files from the device on the SD card and send the files to our service specialists via email. Ideally, the service files will be enough to allow the service technicians to resolve the problem with you via telesupport.

## Make Software Updates by Yourself – Your Benefits as an Operator:

- Always up-to-date with the latest software
- You decide when to update – no deadline pressure, no waiting
- Remain ready for use – no need to ship device for update
- You decide who makes the update at your site thanks to password-protected operator menu
- No risk – making the update is simple and safe

## Active support of your quality management and documentation processes

Important information is automatically saved and quickly and easily made available for export from the SD card. Data include:

- Up to 6,000 function checks, including many details
- Documentation sheet serves as proof that software update has been performed
- Error-free standardization: Customized device configurations can be transferred via SD card from one device to another

## Service data: MEDUVENT Standard

Manufacturer's warranty	Two years
Maintenance interval	Four years
Automatic function check with brief summary	✓
Time for function check	About 25 seconds
Software update can be made by operator/user	✓
User training without O <sub>2</sub> consumption (free simulation software in the device/on PC)	✓
Password-protected operator menu	✓
Battery easily exchangeable by operator	✓
Rechargeable battery	Battery requires no maintenance
Telesupport	✓
Service reminder in device display	e.g., scheduled safety check / maintenance
Electrical Safety Check according to IEC 62353	not necessary
Turbine	Turbine requires no maintenance
Turbine check during general function check	✓

## Never miss a safety check again

MEDUVENT Standard reliably helps users plan for required maintenance with automatic reminders of upcoming maintenance dates at the end of each function check. If the recommended maintenance interval has been exceeded, a screwdriver icon on the start-up screen provides an additional reminder. With these features, MEDUVENT Standard ensures users can safely and responsibly operate the device.



**Manufacturer's service**  
Hotline: +49 40 88 18 96122

# Technical data



## MEDUVENT Standard

Device dimensions	W: 206 mm x H: 137 mm x D: 130 mm
Weight, incl. battery	Approx. 2.0 kg
Product class according to Directive 93/42/EEC	IIb
Operating conditions	<ul style="list-style-type: none"> <li>• Temperature range: -18 °C to +50 °C</li> <li>• Humidity: 0 % RH to 95 % RH without condensation</li> <li>• Air pressure: 540 hPa to 1100 hPa</li> <li>• Altitude above sea level: to 5000 meters</li> </ul>
Battery	<ul style="list-style-type: none"> <li>• Operating time: approx. 8 hrs (depending on device and options)</li> <li>• Charging time (0% - 95%): 3.5 h</li> </ul>
Display	TFT color display 4.3-inch
Data storage	Internal and on SD card
Ventilation modes	<ul style="list-style-type: none"> <li>• Volume-controlled: IPPV, SIMV (with SIMV mode option), S-IPPV (with S-IPPV mode option), Manual (with MEDUtrigger option)</li> <li>• Spontaneous breathing: CPAP</li> </ul>
Operating gas	Medical-grade oxygen (100 % O <sub>2</sub> ) or concentrator oxygen (93 % O <sub>2</sub> ), ambient air
Operating pressure range	0.3 bar to 6 bar
Monitoring	<ul style="list-style-type: none"> <li>• Displayed measurements: O<sub>2</sub>i</li> <li>• Bar graph: pressure with pAW</li> </ul>
Maximum outlet flow	150 l/min
Tidal volume	50 ml to 2000 ml
Ventilation rate	5 min <sup>-1</sup> to 40 min <sup>-1</sup>
PEEP	0 mbar to 20 mbar
Pressure limit (Pmax)	10 mbar to 65 mbar
I:E	1:2 fix / 1:1 in Manual mode
Standards used	EN 60601-1, EN 1789, EN 794-3, ISO 10651-3, RTCA DO-160 G

**CE 0197**

  
 Certified Quality  
 Management System  
 meeting EC directive 93/42/EEC,  
 Annex II (EN ISO 9001:2008/EN ISO 13485)

Technical details and changes reserved.

 Made in Germany



## Simply Professional

WEINMANN Emergency is a family-owned, internationally active medical technology company. With our mobile system solutions for emergency, transport and disaster medicine, we set standards for saving human lives. In close collaboration with professional users in emergency medical services, hospitals and military medical corps, we develop innovative medical products for ventilation and defibrillation. For more than 100 years we have offered our customers a high degree of reliability, extensive experience and quality made in Germany.

### Headquarters

WEINMANN Emergency  
Medical Technology GmbH + Co. KG  
Frohbösestraße 12  
22525 Hamburg  
Germany

T: +49 40 88 18 96-0  
F: +49 40 88 18 96-480  
T: +49 40 88 18 96-120    Customer Service  
T: +49 40 88 18 96-122    After-Sales Service  
E: [info@weinmann-emt.de](mailto:info@weinmann-emt.de)

### Center for Production, Logistics, Service

WEINMANN Emergency  
Medical Technology GmbH + Co. KG  
Siebenstücken 14  
24558 Henstedt-Ulzburg  
Germany

### China

Weinmann (Shanghai) Medical Device Trading Co. Ltd.  
T: +86 21 52 30 22 25 • [info@weinmann-emt.cn](mailto:info@weinmann-emt.cn)

### U.A.E.

WEINMANN Emergency Medical Technology GmbH + Co.KG (Branch)  
T: +971 432 100 31 • [info-dubai@weinmann-emt.com](mailto:info-dubai@weinmann-emt.com)

### France

WEINMANN Emergency France SARL – Paris – Les Ulis  
T: +33 1 69 41 51 20 • [info@weinmann-emt.fr](mailto:info@weinmann-emt.fr)

### Russia

Weinmann SPb GmbH – St. Petersburg  
T: +7 812 633 30 82 • [info@weinmann-emt.ru](mailto:info@weinmann-emt.ru)

### Singapore

Weinmann Singapur PTE, Ltd.  
T: +65 65 09 44 30 • [info-singapore@weinmann-emt.sg](mailto:info-singapore@weinmann-emt.sg)

### Spain

WEINMANN Emergency Medical Technology GmbH + Co. KG  
T: +34 91 79 01 137 • [info-spain@weinmann-emt.es](mailto:info-spain@weinmann-emt.es)

### USA

Weinmann Emergency LP  
T: +1 770-274-2417 • [info@weinmann-emergency.com](mailto:info@weinmann-emergency.com)